





SUPERTRAPP REPLACEMENT MUFFLER

WARRANTY

The SuperTrapp Replacement Muffler is warranted against structural failure due to defects in materials and workmanship for a period of 1 year from date of purchase. The attached warranty card must be mailed within 30 days of purchase. Should any such failure occur within one year, unit will be replaced at no charge upon return and inspection of defective part. There are no other warranties expressed or implied.

Please
Place
Stamp
Here



**SUPERTRAPP INDUSTRIES USA
3910 SEAPORT BOULEVARD
WEST SACRAMENTO, CALIFORNIA 95691**

WARRANTY CARD

**4MDS
AMDR
003-0002**

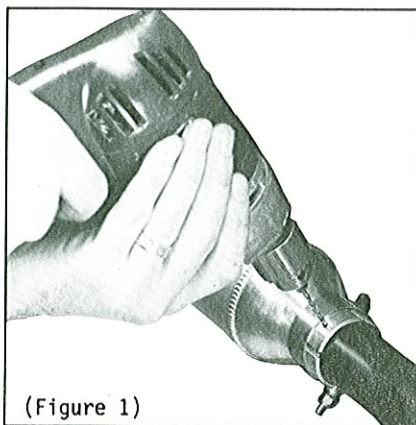


SUPERTRAPP RACING SERIES - DIRT Instructions Supplement

SILENCER RETAINING PIN INSTALLATION

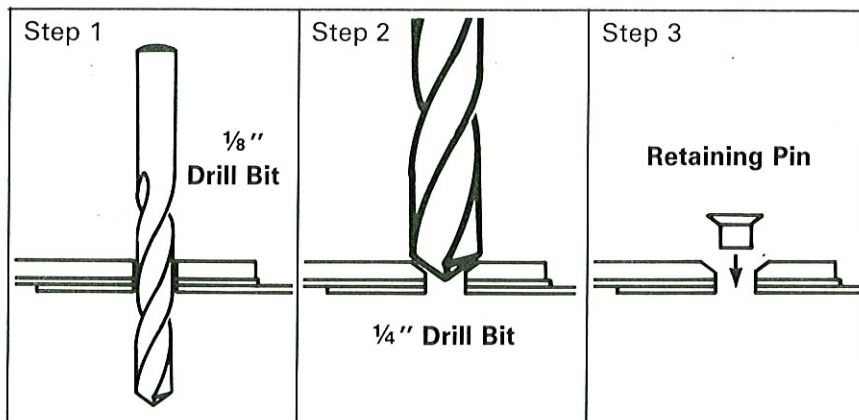
To eliminate the possibility of the core assembly sliding out of the aluminum silencer (if the band clamp is not properly tightened or becomes loose) it is recommended that the retaining pin (supplied) be installed.

1. Slide the band clamp up the silencer.
2. Mark hole placement with center punch and drill 1/8" hole. (Figure 1) Note: Before drilling make sure you drill through perforated steel core and not the slotted portion.



(Figure 1)

3. Using only the tip of a 1/4" drill bit carefully countersink hole for flush installation of retaining pin. (Figure 2).
4. Drop retaining pin into hole, slide clamp over retaining pin and tighten band clamp.



(Figure 2)

FIBERGLASS PACKING

It is normal for loose fiberglass fragments (created during initial assembly) to blow out of the SuperTrapp silencer for a short period of time. This will continue until all excess fiberglass is eliminated and will not affect silencers performance.



MODEL 4MCR-4601 INSTRUCTIONS ('84 and '85 Yamaha XT600)

INLET PIPE INSTALLATION:

1. Loosen head pipe flange nuts.
2. Remove stock muffler.
3. Install SuperTrapp inlet pipe with clamp supplied.
Loosely install front mounting bolt to threaded stand-off.

SILENCER INSTALLATION:

See Tuning section to determine the number of diffuser discs to be used.

When assembling or changing discs, apply a small amount of high temperature lube (supplied) to the threads of each cap screw. Note: The blank diffuser disc (without the center hole) is always to be placed nearest the end cap. This is a non-functioning disc that protects the aluminum end cap from extreme temperatures. Tighten screws, using hex key supplied, in a cross pattern until snug.

1. Install band clamp and slide silencer onto pipe.
2. Install rear mounting bolt with flat washer supplied, loosely.
3. Tighten front mounting bolt, rear mounting bolt, flange nuts, and band clamps.

TUNING:

SuperTrapp Exhaust Systems are uniquely tuneable. Backpressure and noise level are controlled by the number of diffuser discs used. This flexibility allows the exhaust system to be dialed-in to any jetting desired, including stock. This SuperTrapp Exhaust System is supplied with eight diffuser discs plus one blank diffuser disc (always to be placed nearest the end cap) to provide a range of tuneability.

On the average, the use of six diffuser discs will allow the exhaust system to efficiently carburet with stock airbox and filter. An increase in the number of diffuser discs reduces backpressure and increases noise.* When using in excess of six diffuser discs, it may be necessary to increase jetting. A decrease in the number of diffuser discs increases backpressure and reduces noise.

* Motorcyclists are warned that U.S. E.P.A. regulations prevent main jet or pilot jetting increase unless the vehicle is to be used in a pure competition capacity only.

MAINTENANCE:

1. Remove silencer
2. Remove all discs and assemble with end cap only (screws finger tight).
3. Use a 1½" diameter wooden dowel (flat end, not domed) approximately 15" long. Insert into silencer against back of end cap. Carefully knock out core from aluminum housing.
4. Repack core (part number 4AM-4024).
5. Reassemble silencer.

CLEANING:

Soapy water and a soft cloth should be used to clean pipe and aluminum silencer. Do not use abrasive substances on aluminum silencer. A fine Scotch-Brite pad will remove the exhaust deposits from the end cap. The diffuser discs should be removed and cleaned periodically.

ACCESSORIES AND REPLACEMENT PARTS:

Item	Part Number
Diffuser Disc 6-pack	4AM-6506
Stainless Steel Bolts 6-pack (Holds from 7 to 20 discs)	4M-7206
Aluminum End Cap	4M-3046
Repack Kit	4AM-4020



Dear SuperTrapp Customer:

This letter is intended to give you an idea of how the Supertrapp functions in relationship to the following three parameters: power, sound, and jetting.

SuperTrapp Exhaust Systems are supplied with either 8 or 12 diffuser discs. (NOTE: 12 discs are supplied on street/ATV racing models). On 90% of the motorcycles/ATVs for which we offer pipes, using anywhere from 4 to 8 discs will work fine with stock jetting and air filter. On 1983 and later models, consult the EPA label on the muffler for the maximum number of discs to run to meet the legal sound limit (racing models excepted). We consider 4 discs the minimum amount to run; this will flow about the same amount of air that your stock system would. If you wish to run all the discs on models that come with 12 diffuser discs, you should go up 1 to 2 sizes on the main jet. Try this first before changing the needle position or pilot jet.

Example: Let's say you start off with 8 discs and it runs fine, but you want more power. By adding discs you do three things: (1) the exhaust tone will get louder, (2) the motor will run leaner (carburetion), and (3) your horsepower will go up. It's the opposite if you take out discs: the exhaust tone will get quieter, the motor will run richer, and your power will move down. (Remember, we consider 4 discs the minimum, and up to 28 the maximum, but in most cases 20 is maximum).

Hopefully, you now have a better understanding of how your SuperTrapp works. Remember that since the SuperTrapp is basically infinitely tuneable, (just like a carburetor), there are many different combinations to work with; from a box stock motor or a different air cleaner, to a fully modified racing engine.

Please feel free to call our Technical Information Department for any further tuning information you might need, or about any particular problems you're having with your Motorcycle/ATV. Our Racing and Technical Departments are constantly testing and gathering information to help you get the most from your SuperTrapp.

Sincerely,

SuperTrapp Racing and
Technical Information Departments
(916) 756-5069